

Flow Scale LCS-150T

◆Application

This machine is used for cumulative weighing of bulk material (production materials) in grain processing, chemical enterprises, grain depots, ports, etc.。

◆Technical Parameters

Model No.	LCS-150T
Flow Speed (t/h)	150
Max Capacity (kg)	500
Accuracy Grade	0.2
Power & Consumption	AC 220V 50Hz 70W
Air & Consumption	0.4~0.6MPa 1m ³ /h
Outside Dimension	1600*1600*3500

◆Main configuration

No.	Name	Brand
1	Weighing control instrument	Harbin / Zhiyuanda
2	Power switch	Taiwan / Mingwei
4	Knob switch	Shanghai / Fanyi
5	Button	France/Schneider
6	Load cell	AVIC
7	Pneumatic Components	Taiwan/Airtac
8	Cylinder	Taiwan/Airtac
9	Solenoid valve	Taiwan/Airtac

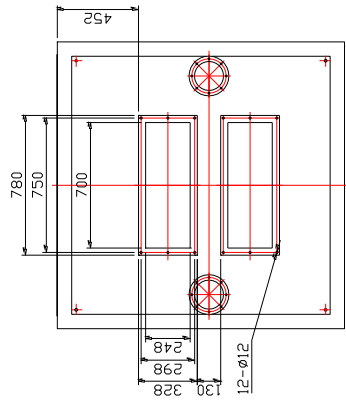
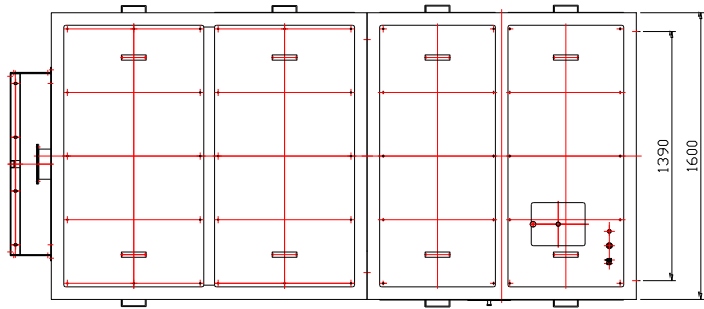
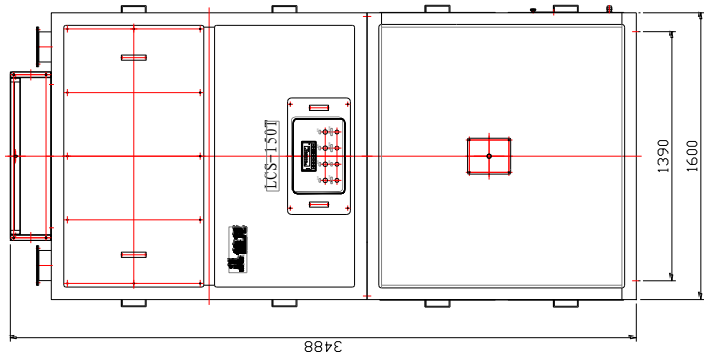
◆Function & Features

- ▲Streamlined mainframe and electric control box fully sealed design (no dust), two-layer structure stable metering.
- ▲ The feeding and measuring mechanism adopts wear-resistant imported stainless steel material and has a long service life.
- ▲The machine body is neat and tidy.
- ▲Reserved RS232/485 serial port for data communication with peripheral

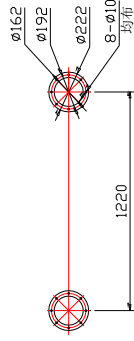
management system.

▲Optional printer to print out production output and other information.

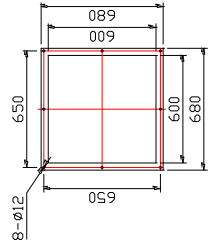




料仓法兰尺寸图



回粉口法兰尺寸图



出料口法兰尺寸
(位于箱体正下方)

漳州佳龙 科技股份有限公司		单、月、日		签名		批准	
安装尺寸图		阶段标记		数量		比例	
LCS-150T		1		1:22		共 1 张 第 1 张	
标记	类数	分区	更改文件号	标准化	设计	绘图	审核